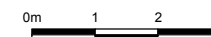
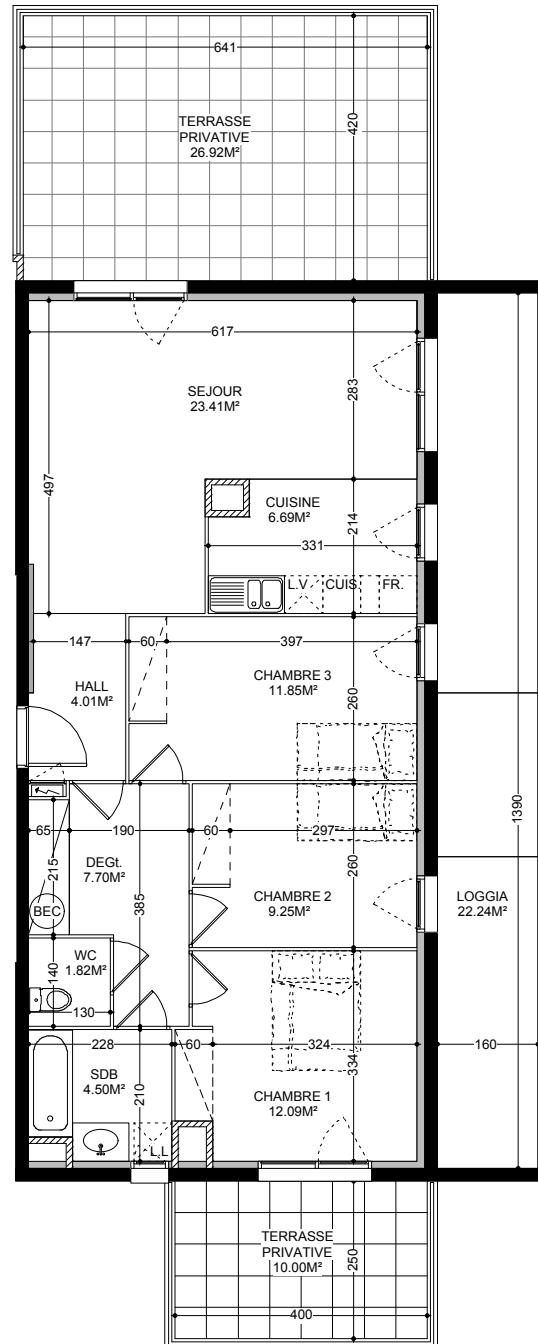
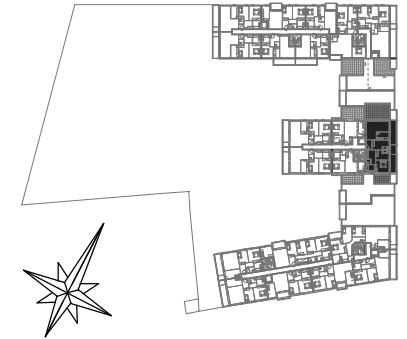


Voie Nouvelle nord / sud

**NIVEAU R+3 - 431 C**



**SURFACES HABITABLES**

HALL	4.01 m <sup>2</sup>
SEJOUR	23.41 m <sup>2</sup>
CUISINE	6.69 m <sup>2</sup>
DEGAGEMENT	7.70 m <sup>2</sup>
CHAMBRE 1	12.09 m <sup>2</sup>
CHAMBRE 2	9.25 m <sup>2</sup>
CHAMBRE 3	11.85 m <sup>2</sup>
SALLE DE BAIN	4.50 m <sup>2</sup>
WC	1.82 m <sup>2</sup>
<b>SURFACE TOTALE</b>	<b>81.32 m<sup>2</sup></b>
LOGGIA / BALCON	22.24 m <sup>2</sup>
TERRASSE	36.92 m <sup>2</sup>
JARDIN PRIVATIF	

Le 24/09/2009

**Les Allées**  
**d'Antarès**